



THE IMPACT OF COVID-19 PANDEMIC ON THE IMPLEMENTATION OF INDONESIA'S 2020 POPULATION CENSUS

Ali Said



Director of Population and Labor Statistics
BPS-Statistics Indonesia



29 November - 1 December 2022



BRIEF OVERVIEW OF INDONESIA'S 2020 POPULATION CENSUS

Indonesia's Population Census 2020 (PC2020)

Is the 7th Population Census

LEGAL BASE



Law No. 16 Year 1997
Statistics

Govt. Reg. No. 51 Year 1999
Statistical Governance



UN Recommendation 2017
World Population and Housing Programme

“It is recommended that a national census be taken at least every 10 years”
(Principles and Recommendations for Population and Housing Censuses, Revision 3)



ONE Data Indonesia
Presidential Decree No.
39 of 2019



National Acceleration Strategy Population
Administration for Development of Vital Statistics
Presidential Decree number 62 of 2019



WHO

All population living or will be living in
Indonesia for at least 1 year



WHERE

All Indonesia's territory
(Including Indonesian representatives
or missions who are living abroad)



2020 INDONESIAN POPULATION CENSUS: COMBINED METHOD

Using administrative population data from the Directorate General of Civil Registration/Ministry of Home Affairs (MOHA) as the basis of conducting 2020 Population Census



**DATA COLLECTED IN PC2020:
12 SAME VARIABLES WITH MOHA DATA**

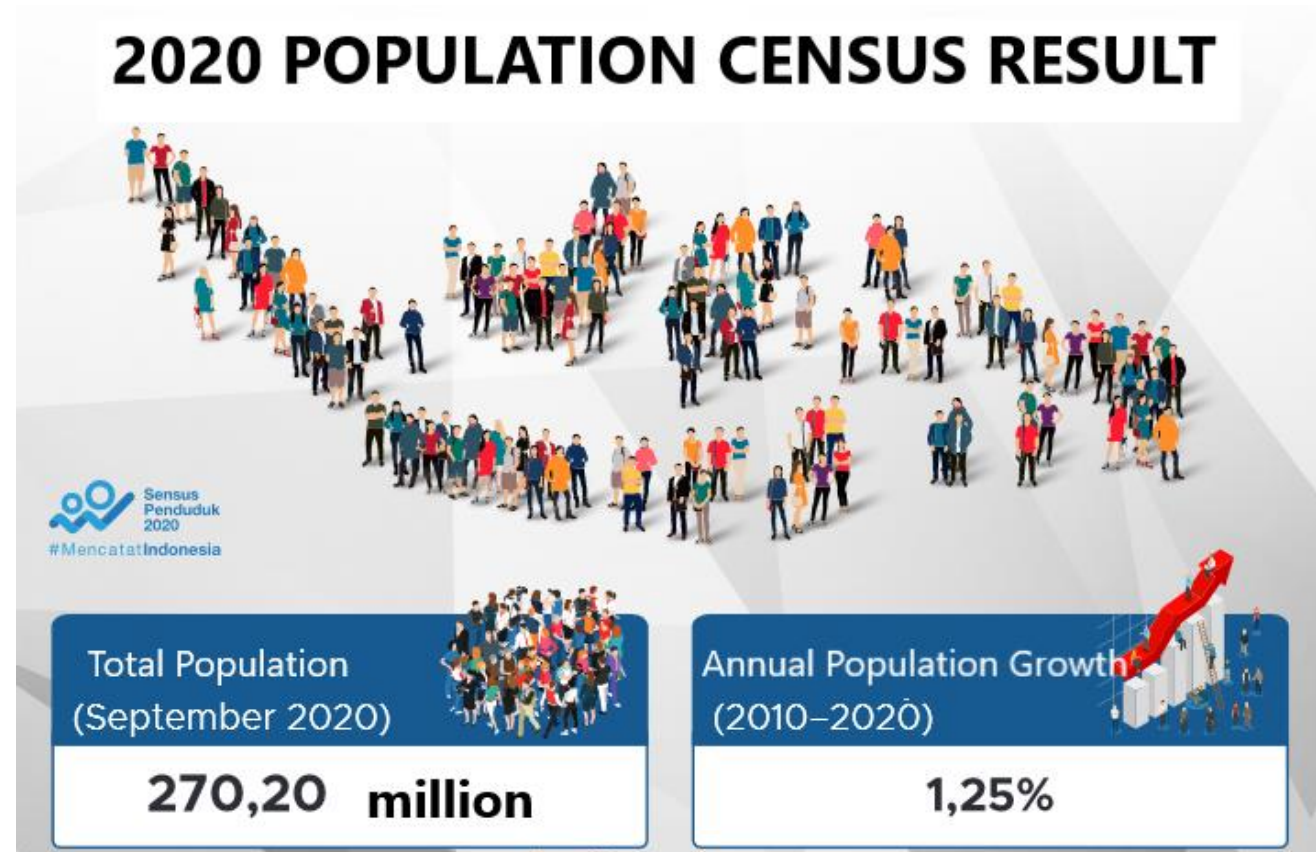


- Name*
- Personal ID Number*
- Family Serial Number*
- Address*
- Sex*
- Place and Date of Birth*
- Nationality*
- Religion*
- Relationship Status on Family*
- Marital Status*
- Education*
- Job*

INDONESIA'S 2020 POPULATION CENSUS: TWO APPROACHES OF DATA COLLECTION

PC2020 used two approaches:

- Online census
- Field enumeration





2



COVID-19 IMPACT ON 2020 POPULATION CENSUS IMPLEMENTATION



World Health Organization

“...countries must take a whole-of-government, whole-of-society approach, built around a comprehensive strategy to prevent infections, save lives and minimize impact.”

30 January 2020

*Coronavirus Disease (COVID-19) declared as **international health emergency***

11 March 2020

*Coronavirus Disease (COVID-19) declared as **pandemic***

INDONESIA RESPONSE



29 February 2020

National Disaster Management Agency, BNPB

Status of Specific Disaster Emergency Conditions due to covid-19 pandemic

COVID-19 PANDEMIC AND GOVERNMENT'S POLICY RESPONSE



- Indonesian Government cut budget allocation of most government institutions to be allocated for Covid-19 mitigation

To respond Covid-19, the government cut PC2020 budget substantially

✓ Approximately from USD 278 Million* → **USD 69 Million**

✓ USD 1.03/capita → **USD 0.26/capita**

* **USD 1 = IDR 14.500.-**

- Government implemented several restriction policy to prevent the spreading of covid-19 pandemic
 - Implementation of Large-Scale Social Restriction (schools, workplaces, religious activities, social-cultural activities, activities in public, modes of transportations, and other activities) during March –May 2020
 - Implementation of Restriction on Social Activities in July 2020



Sensus
Penduduk
2020

#MencatatIndonesia



**IMPACT OF
GOVERNMENT'S
POLICY RESPONSE TO
COVID-19 ON 2020
POPULATION CENSUS
IMPLEMENTATION**



Schedule of Implementation



2020 PC Business Processes/Governance



PC2020 Outputs



3



ADJUSTMENTS MADE IN 2020 POPULATION CENSUS IMPLEMENTATION

ADJUSTMENT ON THE SCHEDULE OF 2020 POPULATION CENSUS IMPLEMENTATION



INITIAL PLAN OF SCHEDULE

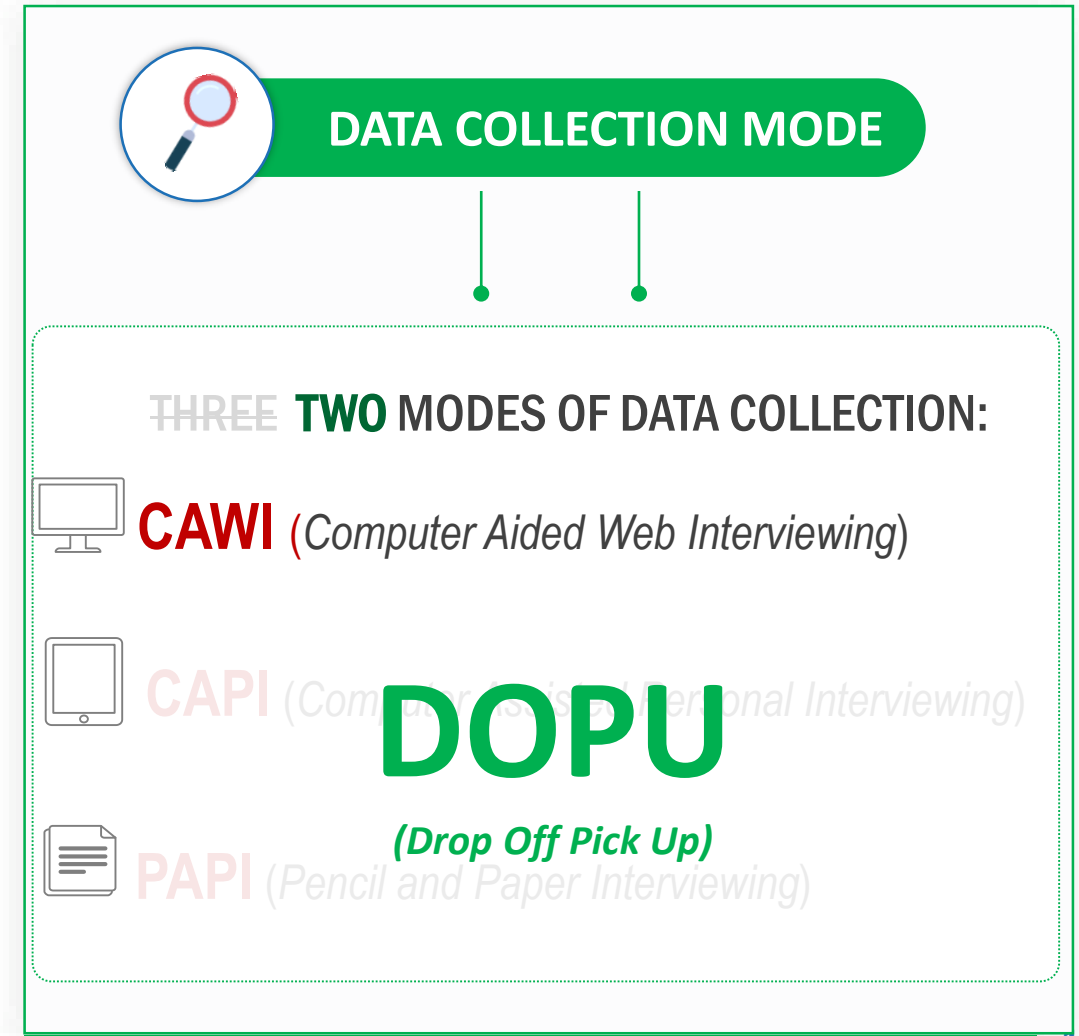
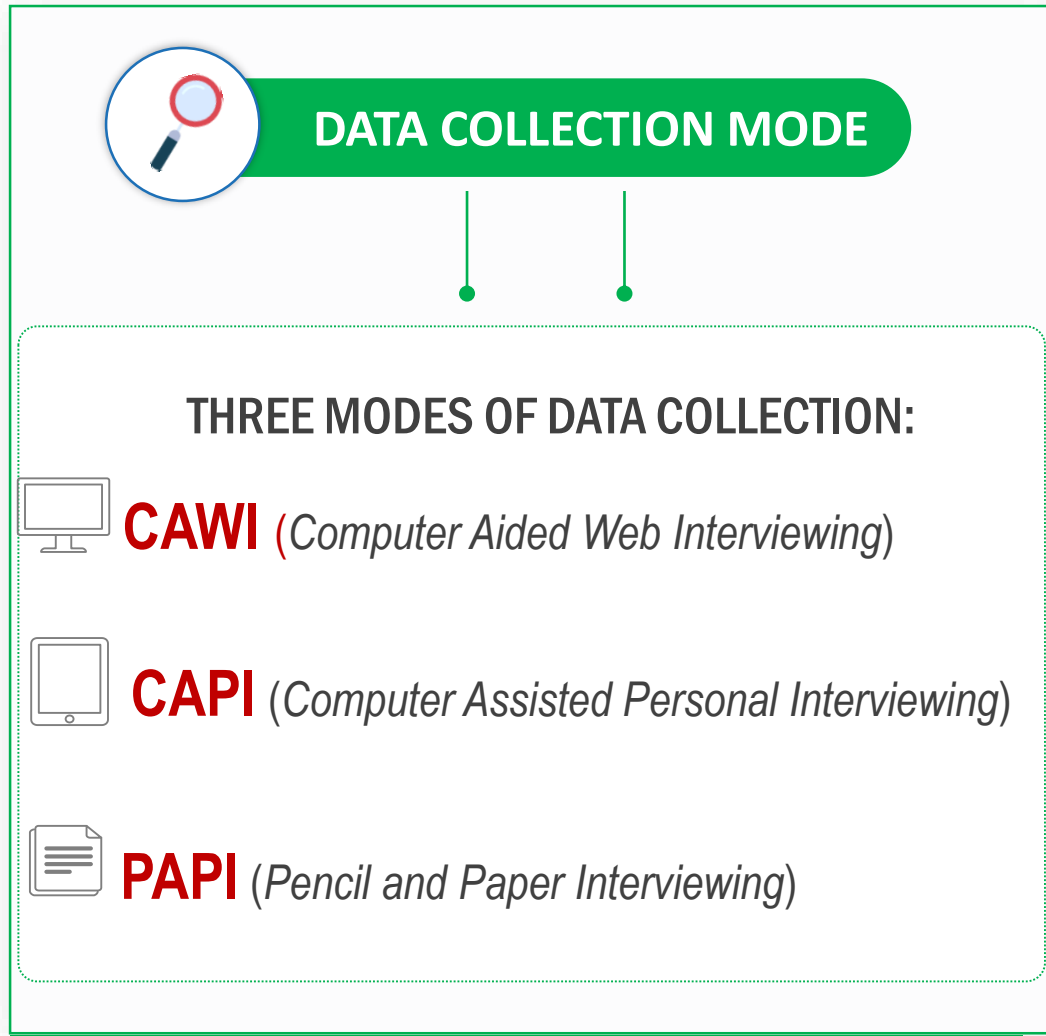
- ✓ **Phase 1: Full enumeration (Short Form Population Census)**
 - a. **Online census**
(15 February – 31 March 2020)
 - b. **Face-to-face interviewing**
(1- 31 July 2020)
- ✓ **Phase 2:
Indepth Survey/Long Form (2021)**



ADJUSTED SCHEDULE

- ✓ **Phase 1: Full enumeration enumeration (Short Form Population Census)**
 - a. **Online census**
(15 February – ~~31 March 2020~~)
29 May 2020
 - ~~b. Face-to-face enumeration~~
(~~1-31 July 2020~~)
 - b. **Ground check and Self Filling Questionnaire**
(1 – 30 September 2020)
- ✓ **Phase 2:
Indepth Survey/Long Form (2022)**

ADJUSTMENT ON DATA COLLECTION MODES FOR 2020 POPULATION CENSUS

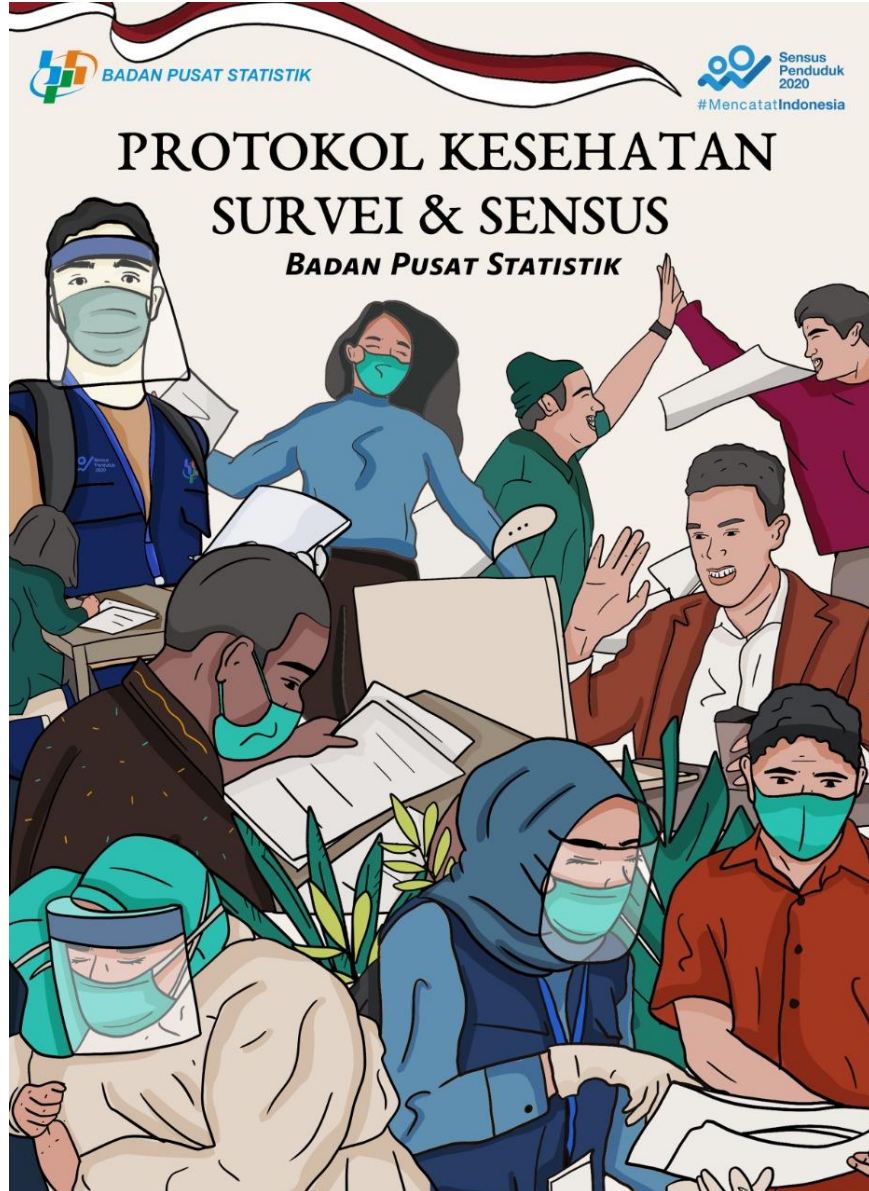


New Governance of 2020 Population Census

- Strict health protocol
- Adjustment in mode of learning
- Implementation of zoning regions and its data collection mode



IMPLEMENTATION OF STRICT HEALTH PROTOCOL



2020 Population Census Officer wearing/using



Untuk tetap menjaga kesehatan dan keselamatan dari petugas sensus dan responden, petugas sensus mengenakan masker, *face shield*, sarung tangan, dan *hand sanitizer* serta menerapkan *physical distancing* saat bertemu responden.

New Business Process Testing

10 Provinces

Once we have a standard health protocol, we think of a new process business for carry on with our census. On a very limited time and budget, with strict health protocols, we conduct testing of our new business process at 10 provinces.



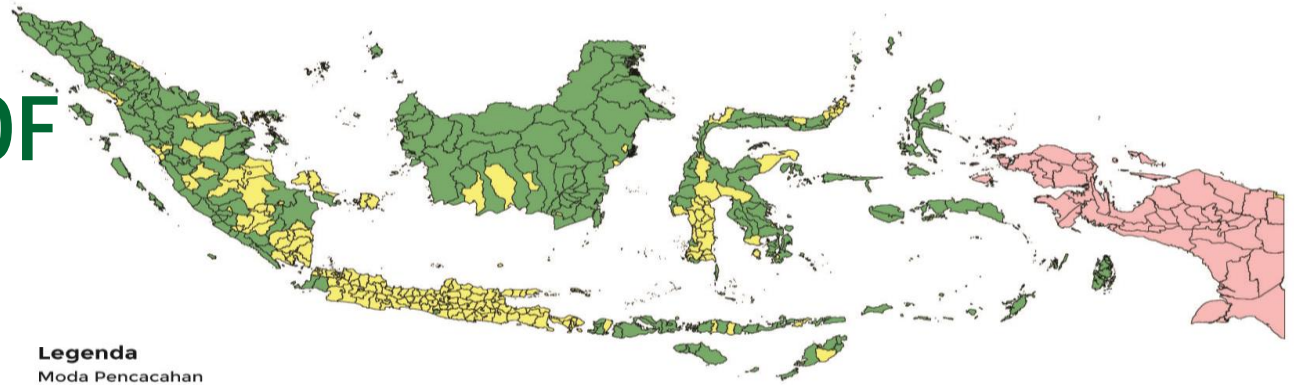


LEARNING MODE ADJUSTMENT

- ❑ *From face-to-face to virtual learning*
- ❑ *Independent learning*
- ❑ *Utilizing TV, Radio and Youtube/Podcast*
- ❑ *Utilizing Whatsapp/Kaizala for discussion and communication*

ZONING REGIONS AND MODE OF DATA COLLECTION

(PC2020 - SEPTEMBER 2020)



Zone 1 - DOPU

227 Districts

64.291.926 person (23,72%)

17.854.463 families (22,08%)

✓ Population register verification

✓ Drop Off Pick UP



Zone 2 - Non DOPU

246 Districts

202.660.948 person (74,76%)

61.725.090 families (76,33%)

✓ Population register verification



Zone 3 - Interview

41 Districts

4.113.492 person (1,52%)

1.284.573 families (1,59%)

✓ Population register verification

✓ Interview

ADJUSTMENT ON OUTPUTS

Zone 1 & 3

Outputs from Population Register (2020)

Population of Indonesia by:

- ✓ Sex
- ✓ Residence status (address, existence, etc)
- ✓ Ownership of Person ID



Outputs from Short Form Quest (2020)


- ✓ Housing characteristics: **5 questions**
- ✓ Individual characteristics all ages: **13 questions**
- ✓ Individual characteristics 5+: **17 questions**



Zone 2

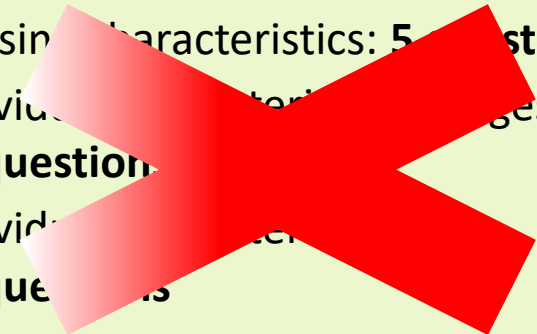
Outputs from Population Register (2020)

Population of Indonesia by:

- ✓ Sex
- ✓ Residence status (address, existence, etc)  (no changes)
- ✓ Ownership of Person ID

Outputs from Short Form Quest (2020)

- ✓ Housing characteristics: **5 questions**
- ✓ Individual characteristics all ages: **13 questions**
- ✓ Individual characteristics 5+: **17 questions**





3

LESSONS LEARNED



Need New Strategies

- ❑ *Redesigning the Questionnaire : Interviewing → Self Filling*
- ❑ *Simplification of business processes: reducing face-to-face interaction time → self enumeration (drop off and pick up questionnaire)*
- ❑ *Simplify field operation → Recruiting less census takers*
- ❑ *Make optimal use of administrative data and use standard statistical techniques for data imputation*
- ❑ *Strong coordination with all government agencies up to village level.*



- ❑ *Strong legal basis is a must.*
- ❑ *Safety is number ONE priority.*
- ❑ *Monitoring progress is essential.*
- ❑ *Testing new method/business process should be carried before implementing new method.*
- ❑ *Post Enumeration Survey (PES) should be conducted for key indicators to assure the quality of census.*



BADAN PUSAT STATISTIK

THANK YOU

www.bps.go.id



Credit to:
Humas BPS | UKKBPS | Pexels | Slidesgo | Freepik | Flaticon

